

Base Station Site Audits

Aerial Site Audits by Remotely Piloted Aircraft

LS of South Africa conducts comprehensive base station site audits by means of Remotely Piloted Aircraft (RPA), providing a cost-effective, highly-accurate record of site information. For the first time ever, mobile operators can determine in a quick and cost-effective way, the true onsite RF characteristics of their sites. Audits are done without any disruption to services. Furthermore, results from the RF audit can be expressed as individual sector or combined coverage predictions.

Spectrum Audit

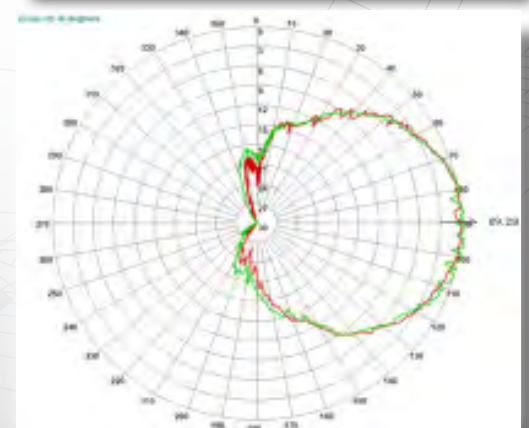
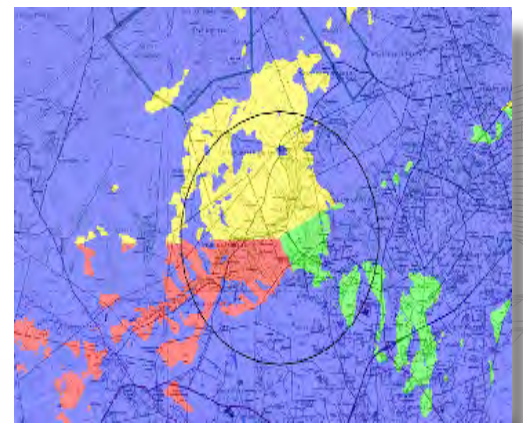
- Frequency Identification
- Antenna Orientation (Tilt, Polarisation and Azimuth)
- EIRP Measurements
- Frequency Spectrum Scan (Identification of all other transmissions emitting from site)
- Regulatory Compliance Checks

Mast Audit

- Mast Position and Height
- Mast Occupancy
- Antenna Location (Height)
- Maintenance Inspections
- Installation Quality Inspections

Value-Added Services

- Site Optimisation
- Coverage Predictions
- Backbone Transmission Link Planning
- High-Resolution Photos and Video Records



LS of South Africa Radio Communication Services (Pty) Ltd

www.LSofSA.co.za